

125K-R-232-W1

125K Read only RFID Reader with RS232 Interface

FEATURES

- Built-in transceiver antenna;
- Maximum effective distance up to 8-10 cm;
- Less than 100ms decoding time;
- Low power dissipation with single power supply;
- RS232 interface;
- Support EM4100 or compatible 125Khz read only tags
- Built-in bi-color LED and buzzer;



SIZE : (75 x 115 x 15) mm

INTERFACE DESCRIPTION

Wire color	Pin Assignment	RS232 DB9
Red	9V To +12V DC	
Black	Power Ground	
Green	RS232 - TXD	Pin 2
Yellow	RS232 - Ground	Pin 5

Protocol

Band Rate : 9600,N,8,1

STX (02 HEX)	DATA (10 HEX)	CR	LF	ETX (03 HEX)
--------------	---------------	----	----	--------------

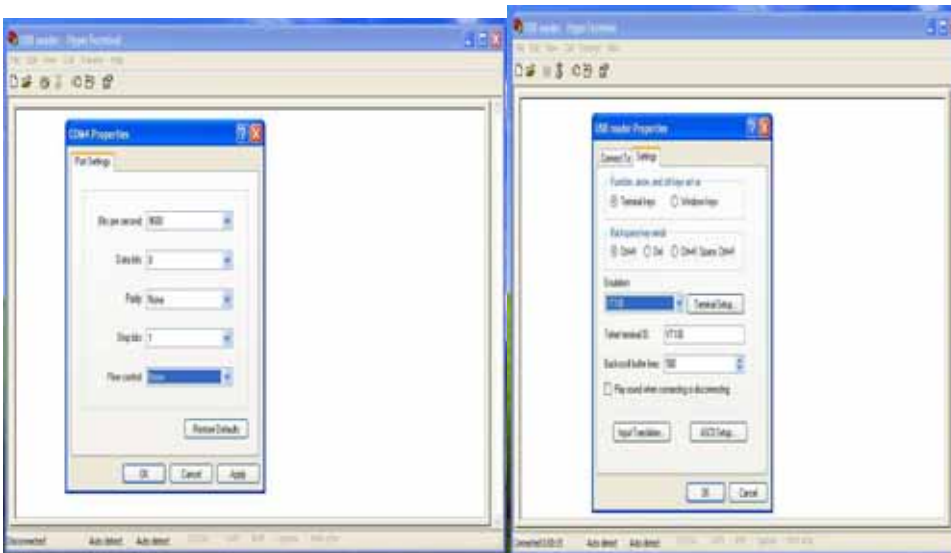
RFID Read-Only Reader with RS232 interface

Testing Procedure by Windows XP – Hyper Terminal

- [1] connect the reader with PC' RS232 com port;
- [2] apply 9V-12V DC to the reader
- [3] open Hyper Terminal or other com testing program :
Start > all program > accessories > communications > hyper terminal ;



- [4] set the com port parameter as follow :
Baud rate : 9600 , N , 8 , 1 / Flow control : None / Telnet Terminal : VT100
COM port number : select the correct "com port" which is connected with the reader



- [5] read the RFID tags and the ID will be shown on the screen as follow :

Hyper Terminal Screen

