

125K-RW-USB-D1

EM4100 125K RFID reader/writer with USB interface

USB driver Installation

[1] install the following USB driver before connect the reader to PC

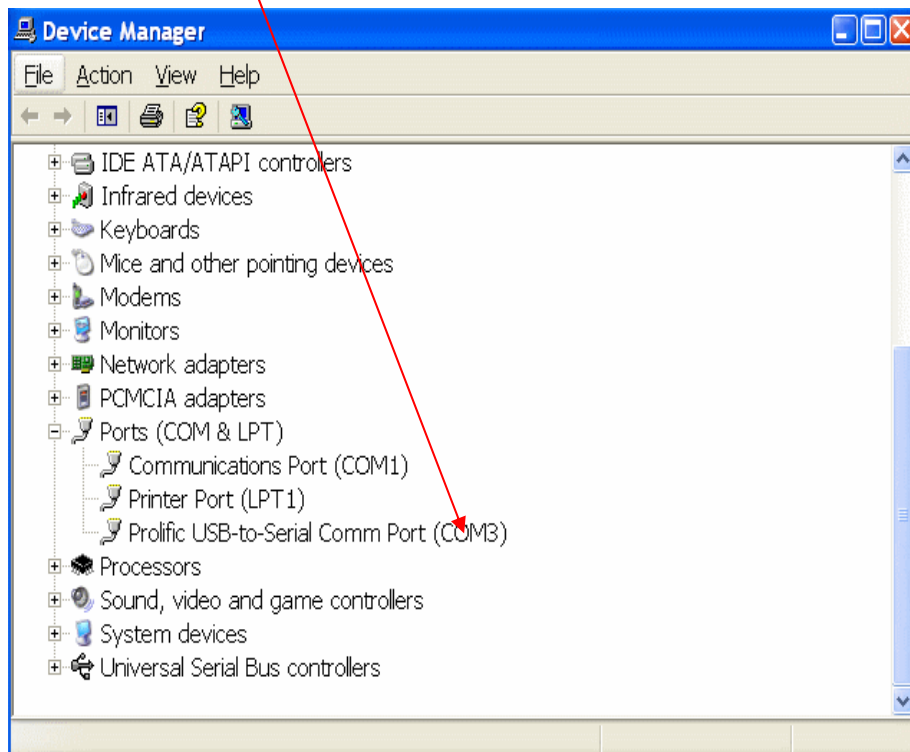
For WINDWOS XP - run CD path:\USB driver\PL-2303 Driver Installer.exe

For Vista & Win 7 – driver path :\USB driver\Vista & win7 driver (manual install is needed)

[2] after driver installation , connect the reader to PC through the USB cable

[3] it will detect and install the "USB to serial " virtual com driver automatically

[4] the virtual com driver will be found from the system manager as follow :

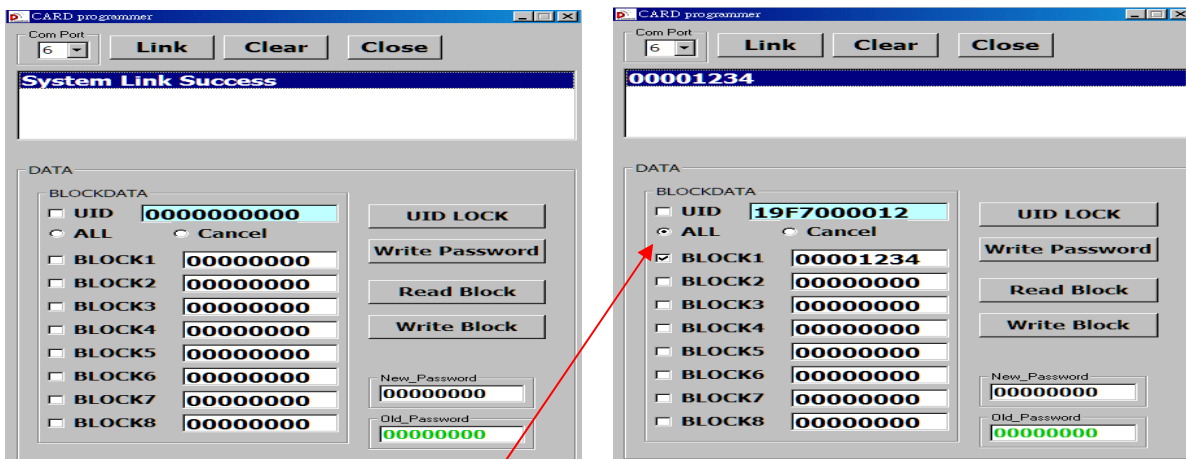


Protocol

Band Rate : 9600,N,8,1

Demo program user guide

- [1] copy full directory from the CD path : \demo program to your local PC
remake : The demo program can not be run from CD directly
- [2] run the program from the path : \demo program \rfid.exe
- [3] select a suitable "Com Port" No.
- [4] click on "Link"
- [5] System Link Success if successfully as follow :



Com Port : select correct virtual com port No.

Link : connect with PC

Clear : clear message screen

Data

UID : 64 bit (compatible ID with EM4100/EM4102)

ALL : click on to select all Block(1-8) to read or write

need to unselect UID when select the block to read or write

Cancel : click on to cancel all block selection

memory : block(1-8) x 32bit

Write Password : set 32 bit password with "New Password"

Read Block : read Card UID or data block memory

Write Block : write card UID , password and data block memory

How to duplicate a EM4100 or compatible card

- [1] place a EM4100 card on the reader
- [2] Tick "UID" and click on "Read Block" to read the UID
- [3] take away the original EM4100 card and put a "125K-RW" card on the reader
- [4] Tick "UID" and click on "Write Block"
- [5] "Write UID success" message will show if write UID successfully

Remarks :

If found "Read Block Data fail" error message , pls hold the card on hand and keep ~1-2 cm distance from the reader for read/write operation