

134K-RW-USB-D1

134.2Khz ISO11784/11785 RFID reader/writer with USB

Writer Program User Guide

USB driver Installation

[1] install the following USB driver before connect the reader to PC

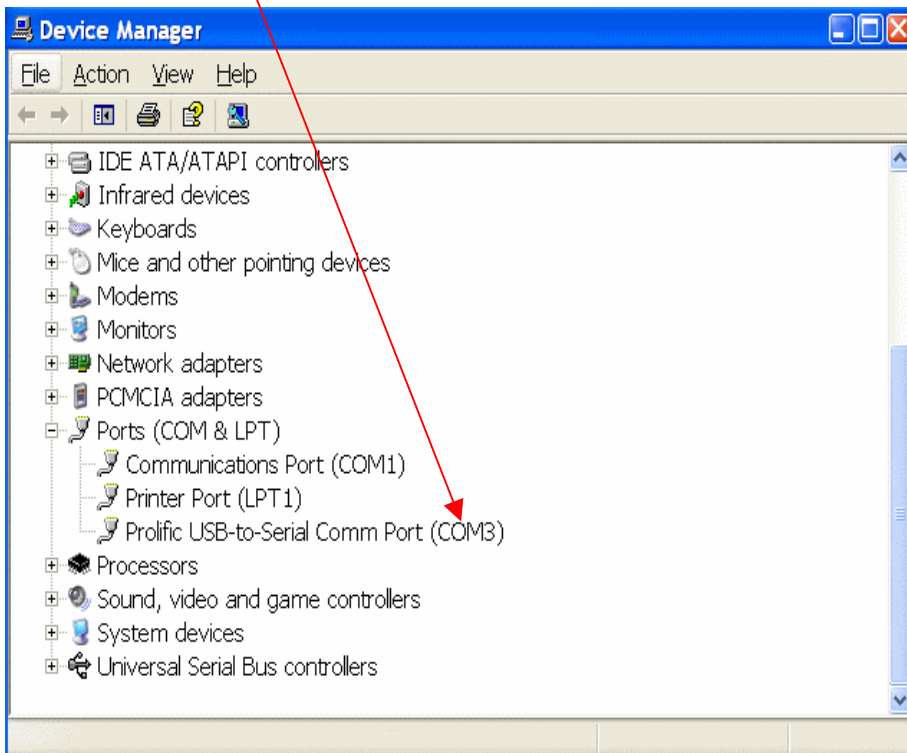
For WINDWOS XP - run CD path:\USB driver\PL-2303 Driver Installer.exe

For Vista – run CD path:\USB driver\PL-2303 Vista Driver Installer.exe

[2] after driver installation , connect the reader to PC through the USB cable

[3] it will detect and install the "USB to serial " virtual com driver automatically

[4] the virtual com driver will be found from the system manager as follow :



Setup connection

[1] copy full directory from the CD path : \writer program to your local PC

remake : The writer program can not be run from CD directly

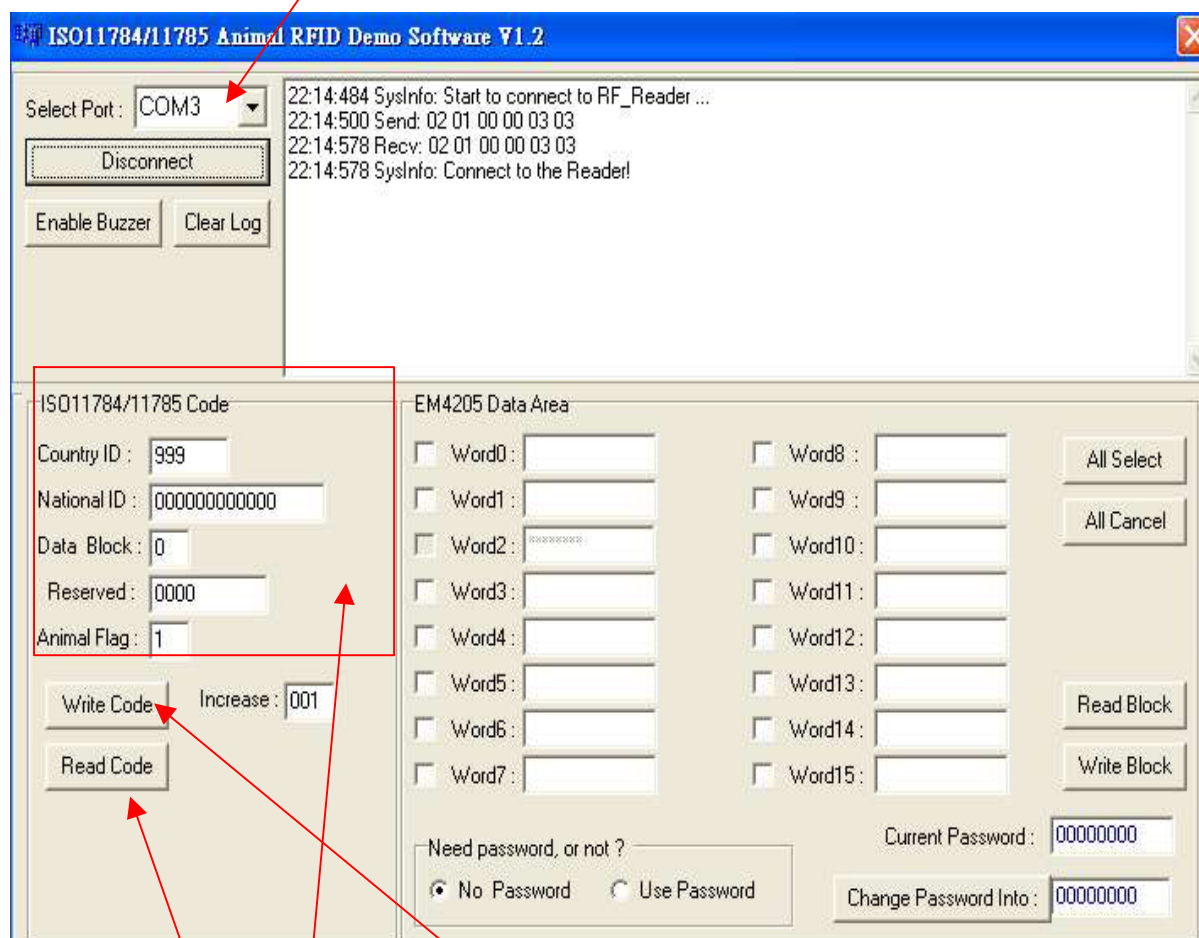
[2] run the program from the path : \writer program\setup.exe

[3] after installation then run the program

[4] select a suitable "Com Port" No. and click on "connect"

[5] "Connect to the Reader" will be shown if connection successfully .

If fails , Pls check or re-install the "USB to Serial" driver as above .



How to read/write ISO11784/11785 data format

[1] put the EM4205/EM4305 tag on the reader

[2] enter ISO11784/11785 data , then click on "write code"

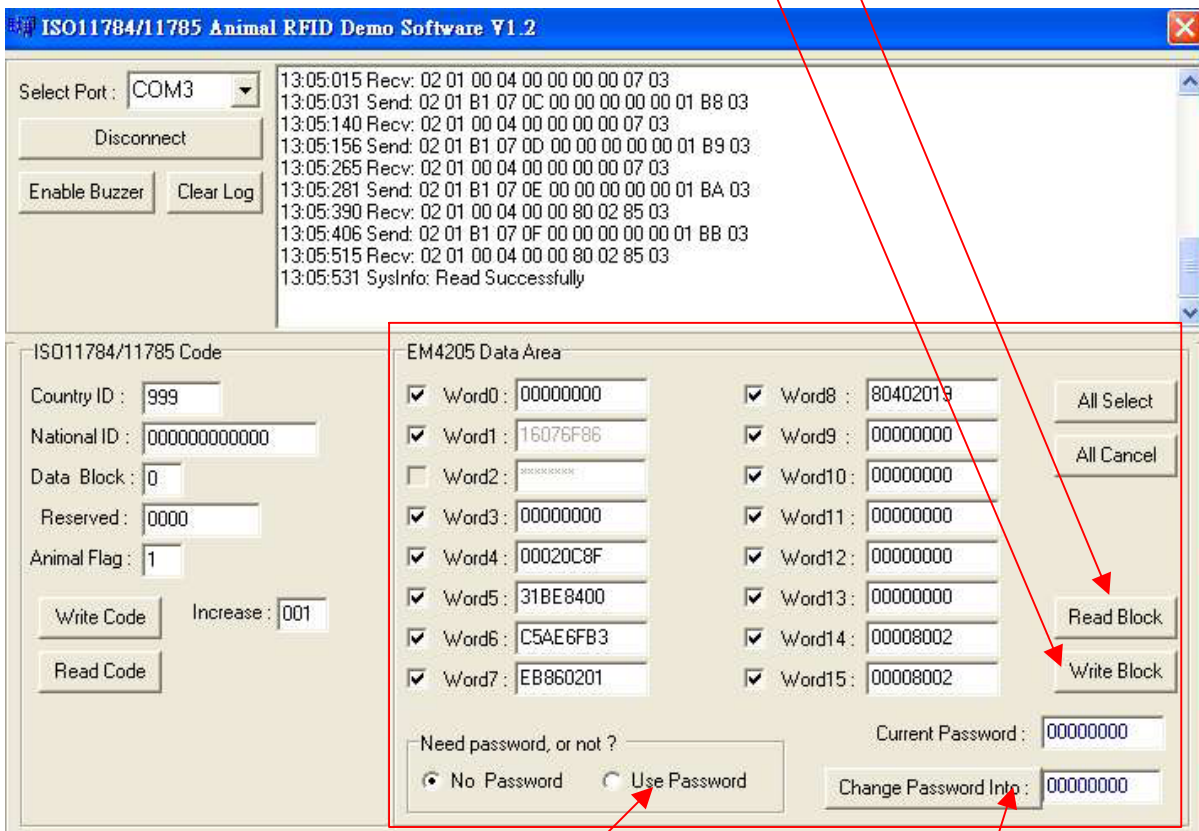
[3] Click on the "Read Code" to read data

How to read internal memory data

- [1] put the EM4205/EM4305 tag on the reader
- [2] Click on "All Select " or select the word# which you need input data.
- [3] click on "Read Block" to read tag internal memory data

How to write internal memory data

- [1] put the EM4205/EM4305 tag on the reader
- [2] select the word# which you need input data.
- [3] Fill in the data in the selected word ,
- [4] click on "Use Password" and "Write Block" to write data



Remakes :

- [1] Refer to the Tag's Datasheet for other function and feature for operation
- [2] When click on "All select" , all the word# will be selected except word 2 as is a password so it can't be read
- [3] click on "Use Password" if need "write Block" to the word
- [4] default password is "00000000" , click on "change Password Info." To change it